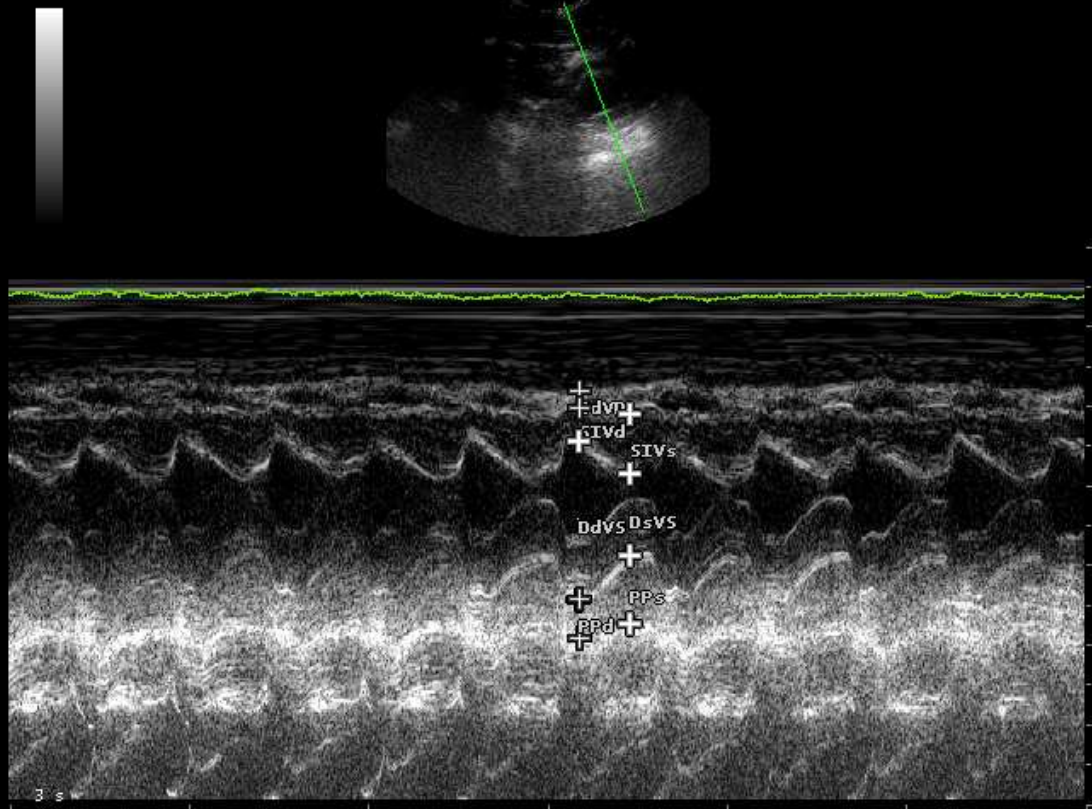


B F 6.6 MHz G 52%
P 7 cm
PRC 7-3-A PRS M
PST 2

M G 52%
PRC 6-3
PST 2

CARDIO CA123

VS		
DdVD	2.1	mm
SIVd	4.1	mm
DdVS	19.9	mm
PPd	4.9	mm
SIVs	7.5	mm
DsVS	10.3	mm
PPs	8.6	mm
FE	82	%
FS	48	%
S%	84	%
PP%	74	%
MVS	3	g



FC <<

3 s