

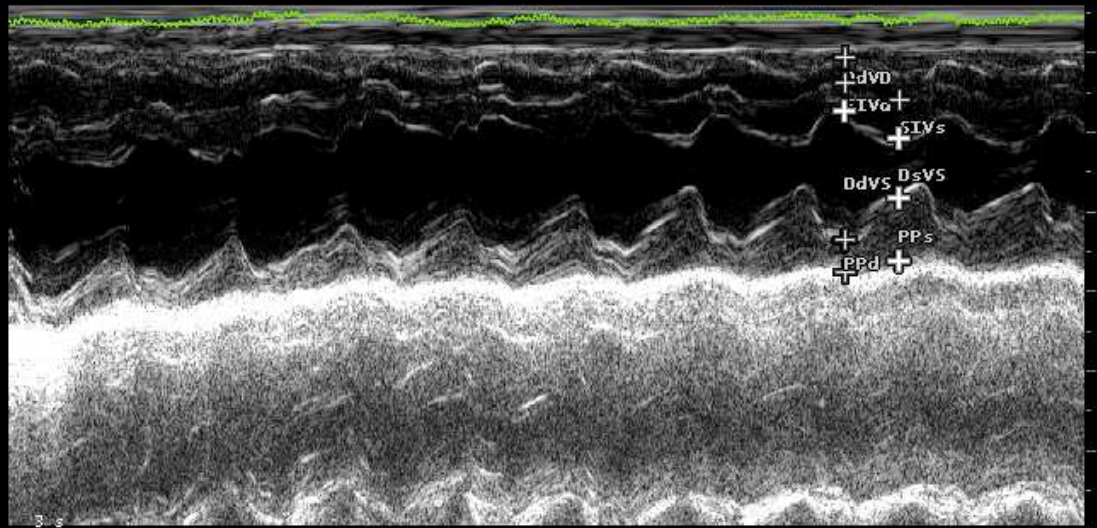
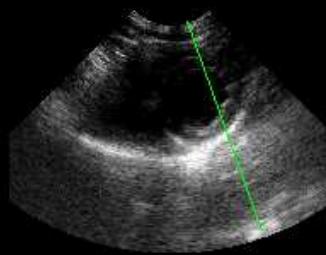
B F 6.6 MHz G 52%  
P 7 cm  
PRC 7-3-A PRS M  
PST 2

M G 52%  
PRC 6-3  
PST 2

CARDIO CA123

**VS**

DdVD	3.2 mm
SIVd	3.4 mm
DdVS	16.3 mm
PPd	4.1 mm
SIVs	4.7 mm
DsVS	7.5 mm
PPs	7.9 mm
FE	88 %
FS	54 %
S%	38 %
PP%	95 %
MVS	4 g



FC <<