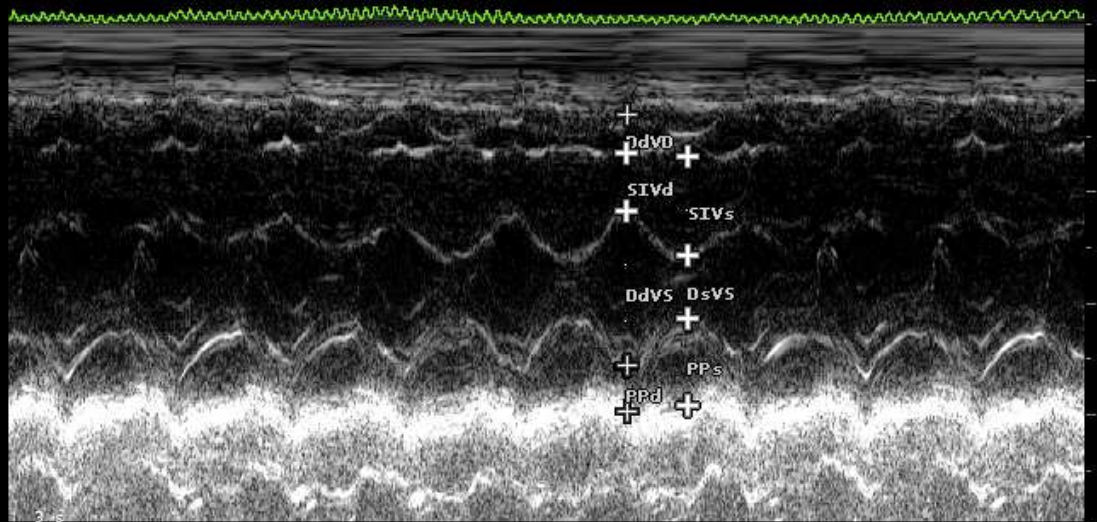
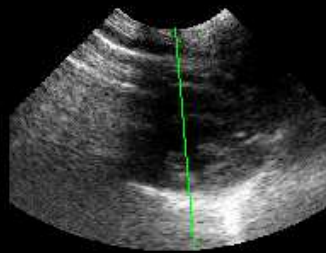


B F 6.6 MHz G 76%
P 5 cm
PRC 7-3-A PRS M
PST 2

M G 76%
PRC 6-3
PST 2

CARDIO CA123

VS		
DdVD	3.4	mm
SIVd	5.2	mm
DdVS	13.9	mm
PPd	4.1	mm
SIVs	8.9	mm
DsVS	5.7	mm
PPs	7.8	mm
FE	91	%
FS	59	%
S%	71	%
PP%	89	%
MVS	3	g



FC <<