

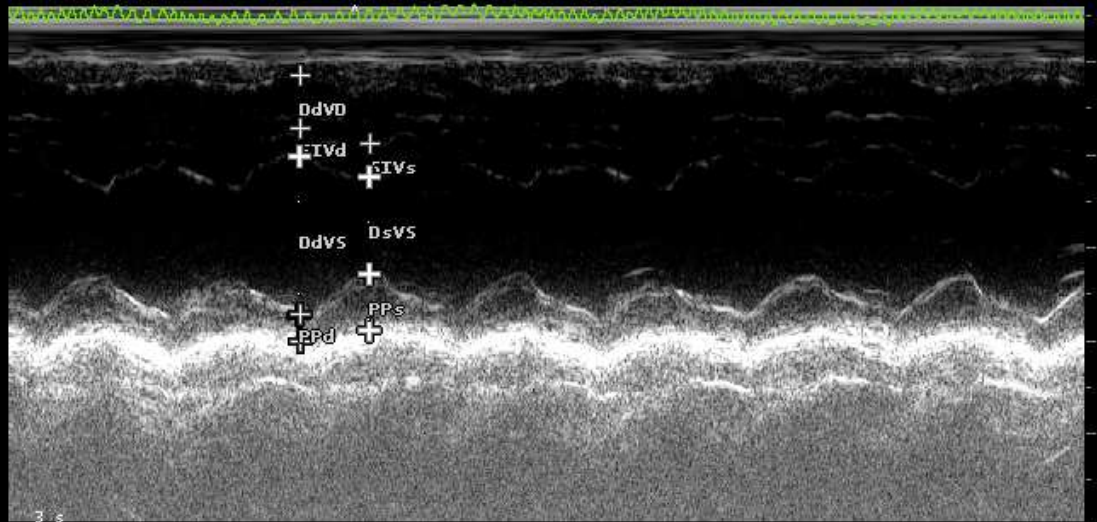
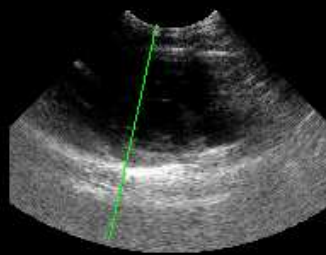
B F 6.6 MHz G 88%
P 6 cm
PRC 7-3-A PRS M
PST 2

M G 88%
PRC 6-3
PST 2

CARDIO CA123

VS

DdVD	5.7	mm
SIVd	2.9	mm
DdVS	17.1	mm
PPd	2.9	mm
SIVs	3.5	mm
DsVS	10.5	mm
PPs	6.1	mm
FE	73	%
FS	39	%
S%	19	%
PP%	106	%
MVS	6	g



FC 56