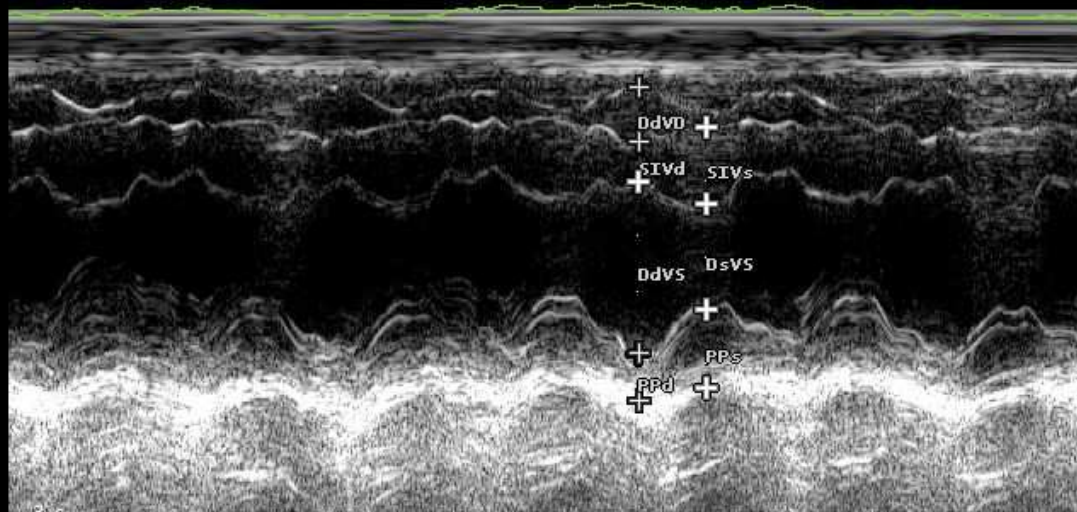


B F 6.6 MHz G 70%
P 5 cm
PRC 7-3-A PRS M
PST 2

M G 70%
PRC 6-3
PST 2

CARDIO CA123

VS		
DdVD	4.9	mm
SIVd	3.5	mm
DdVS	15.4	mm
PPd	4.3	mm
SIVs	6.9	mm
DsVS	9.5	mm
PPs	7.0	mm
FE	73	%
FS	39	%
S%	96	%
PP%	64	%
MVS	4	g



FC <<