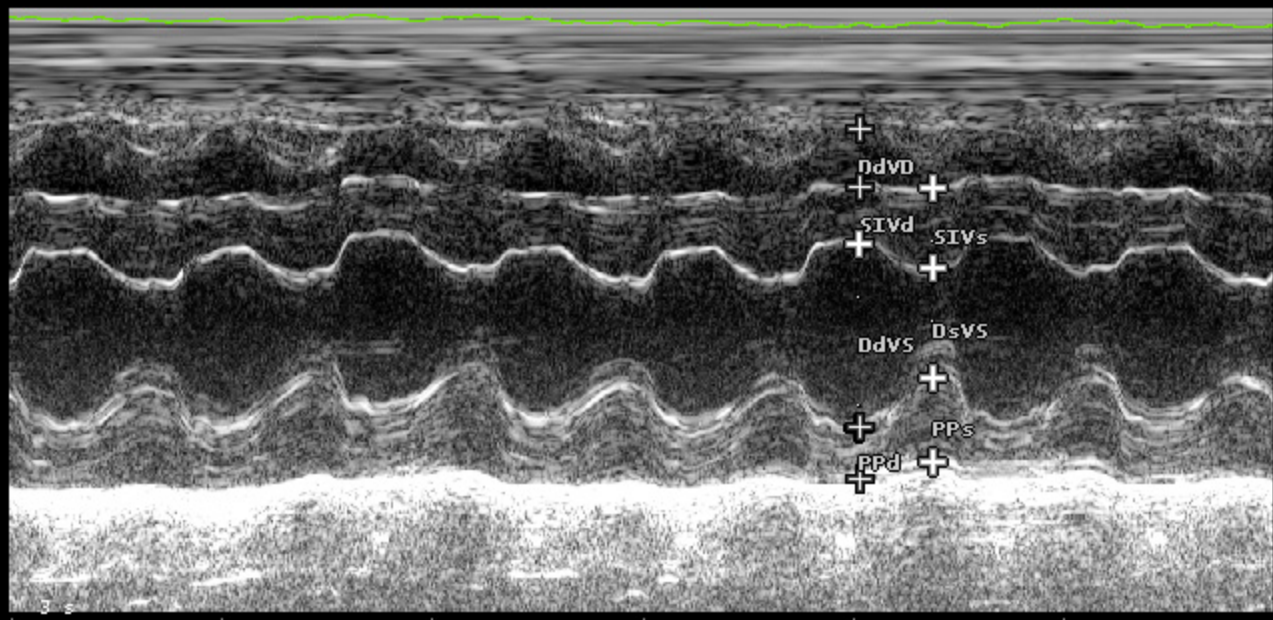
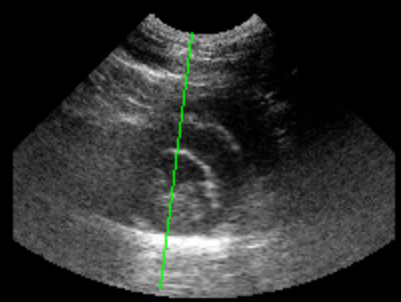


B F 6.6 MHz G 97%
P 6 cm
PRC 7-3-A PRS M
PST 2

M G 97%
PRC 6-3
PST 2

CARDIO CA123

VS
DdVd 5.3 mm
SIVd 5.1 mm
DdVs 16.9 mm
PPd 4.8 mm
SIVs 7.3 mm
DsVs 10.1 mm
PPs 7.7 mm
FE 74 %
FS 40 %
S% 43 %
PP% 62 %
MVS 1 g



FC <<