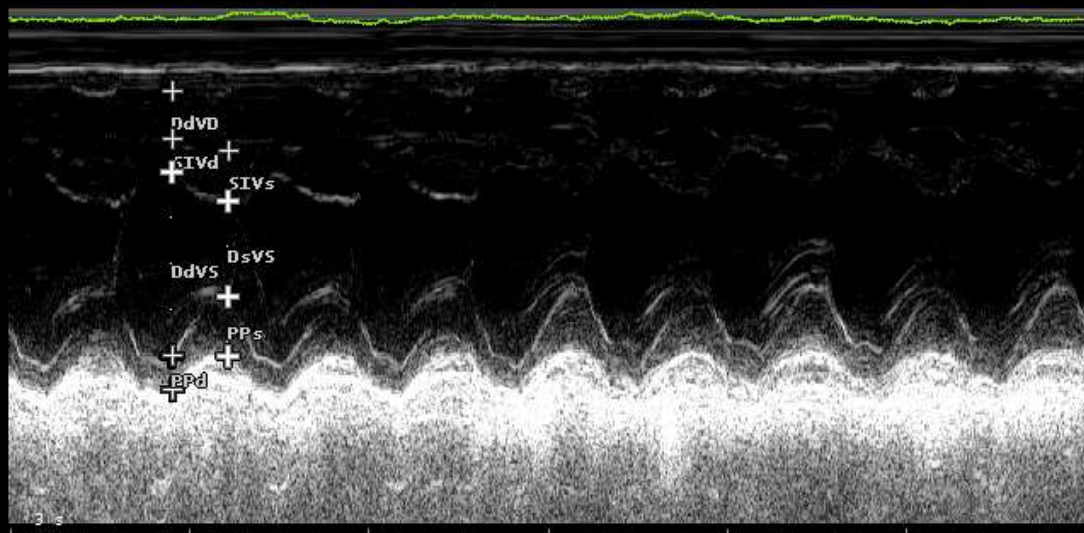
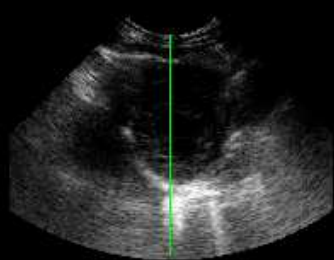


B F 6.6 MHz G 55%  
P 6 cm  
PRC 7-3-A PRS M  
PST 2

M G 55%  
PRC 6-3  
PST 2

CARDIO CA123

<b>VS</b>		
DdVD	5.1	mm
SIVd	3.5	mm
DdVS	19.8	mm
PPd	3.7	mm
SIVs	5.3	mm
DsVS	10.3	mm
PPs	6.4	mm
FE	82	%
FS	48	%
S%	53	%
PP%	75	%
MVS	1	g



FC <<